



EU Japan Support Mission in the Space Sector
Japan, 5th - 8th September 2017



EU-Japan Centre
for Industrial Cooperation
日欧産業協力センター

monitor
b
s
understand
r
v
forecast

Who we are



Spatial Earth Observation



Odile H. Fanton d'Andon
CEO



Ecotechnology & Environment



François-Régis Martin-Lauzer
CEO

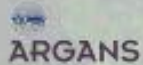


Civil & Coastal Engineering



Philipape Bardey
CEO

Subsidiaries



Subsidiaries



Facilities / Infrastructure

Sophia Antipolis, South of France



Facilities / Infrastructure Subsidiaries



ACRI-EC, Casablanca, Morocco



ACRI-HE Brest



ARGANS, Plymouth, UK



AdwaisEO, Luxembourg

What we do

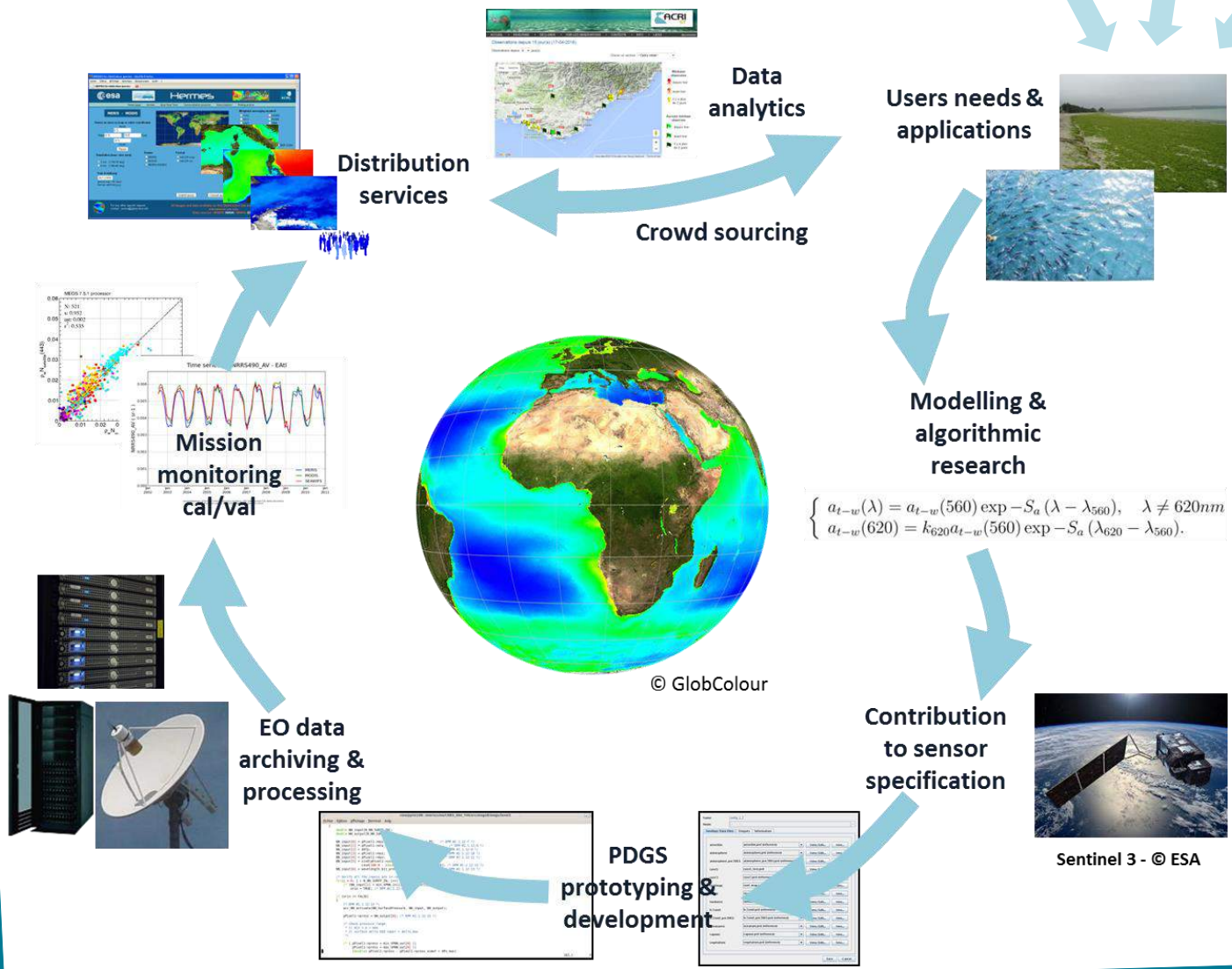
Key Sectors



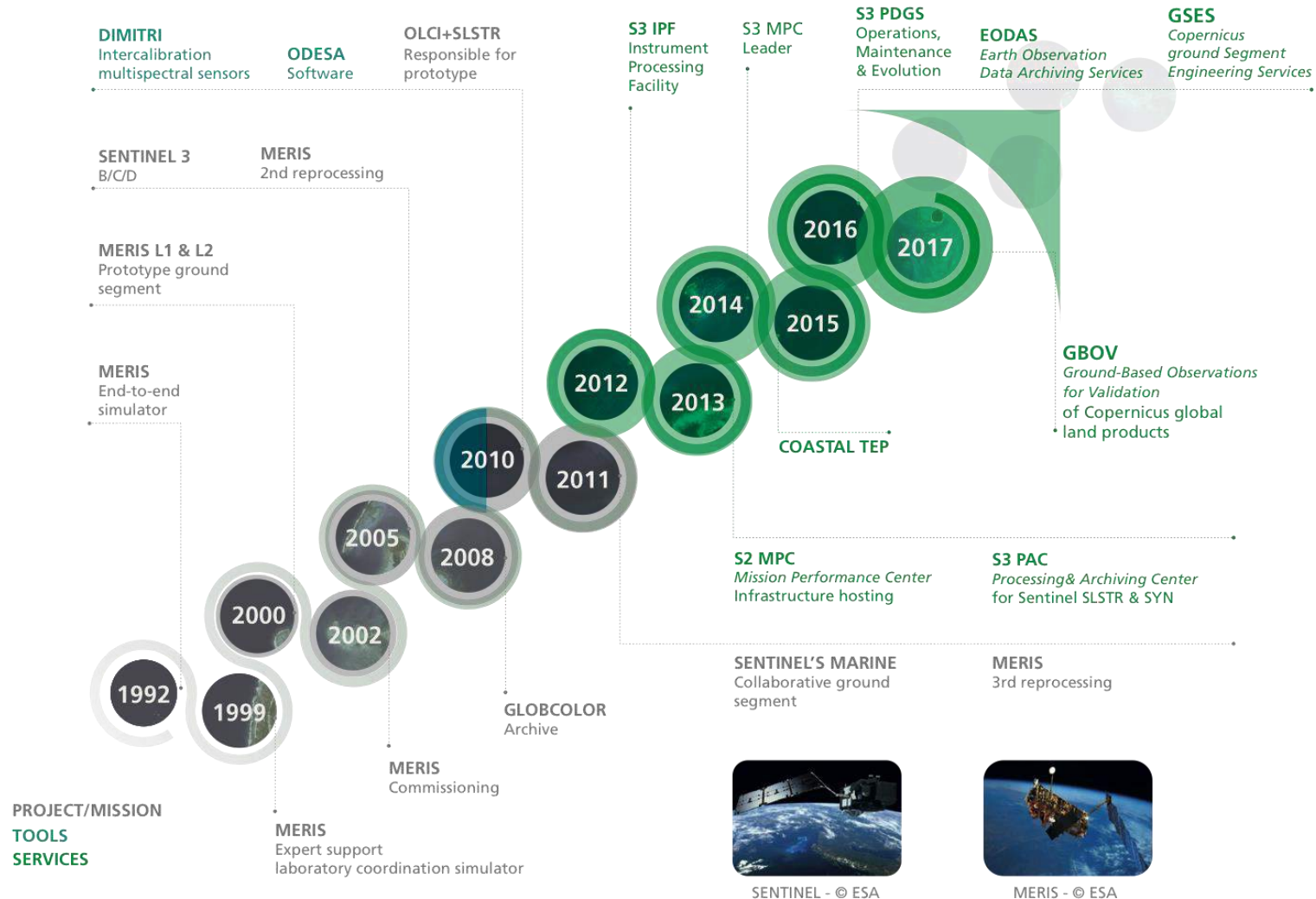
ACRI operates the whole chain
From Space Industry & Earth Observations (EO) to user needs & Applications

Satellite Remote Sensing Earth Observation Systems & Services

Coastal Civil Engineering
 Environmental Monitoring
 Forecast & Surveillance
 Development of Decision-Making Tools & Solutions



Background and References From Services....



Background & References ...to Applications



COASTAL ENVIRONMENT MONITORING
REPORTING ON THE GOOD
ENVIRONMENT STATUS
(ecosystem monitoring...)



ENVIRONMENTAL DIRECTIVES
APPLICATION
(bathing waters...)



CIVIL ENGINEERING OPERATIONS
SUPPORT
(harbour construction, dredging, sea
farming installation...)



NATURAL RISKS ANALYSIS
(tsunami, coastal erosion,
submersion...)



CARTOGRAPHY
(bathymetry...)



SHORELINE & COASTAL ZONES
PLANNING SCHEMAS PREPARATION

❑ GlobColour, GlobTemp

- Data archive & dissemination website of Level 3 multisensor products
- Ocean Colour products (GlobColour)
- Land Surface Temperature (GlobTemp)



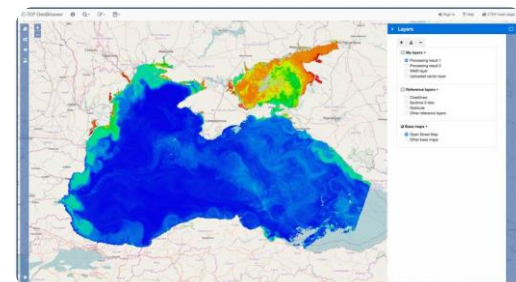
❑ SAFI

- On-line service demonstrator for aquaculture & fisheries :
Aquaculture site selection & monitoring
Fishery monitoring



❑ Coastal Thematic Exploitation Platform

- Data access & remote processing service for coastal environment exploration & monitoring
- Very easy integration of user-provided software
- User community and sharing





Typology of Customers

- Water, energy managers & natural resources holders
- Water quality monitors
- Harbours, fluvial & lake managers
- Marine sector industrials, shellfish, aquaculture
- Design offices
- Authorities in charge of natural risks management
- Territory planning services
- Territorials agencies, ministries, public institutions
- Spatial agencies & research institutes
- French metropolis, French overseas



They are trusting us

- ADB / Asian Development Bank
- ADEME
- EDF
- Harbour authorities
- Hatfield ltd
- IFREMER
- PACA region
- Phosboucrâa Foundation, Morocco
- RTE
- SHOM
- VEOLIA
- World bank
- WWF

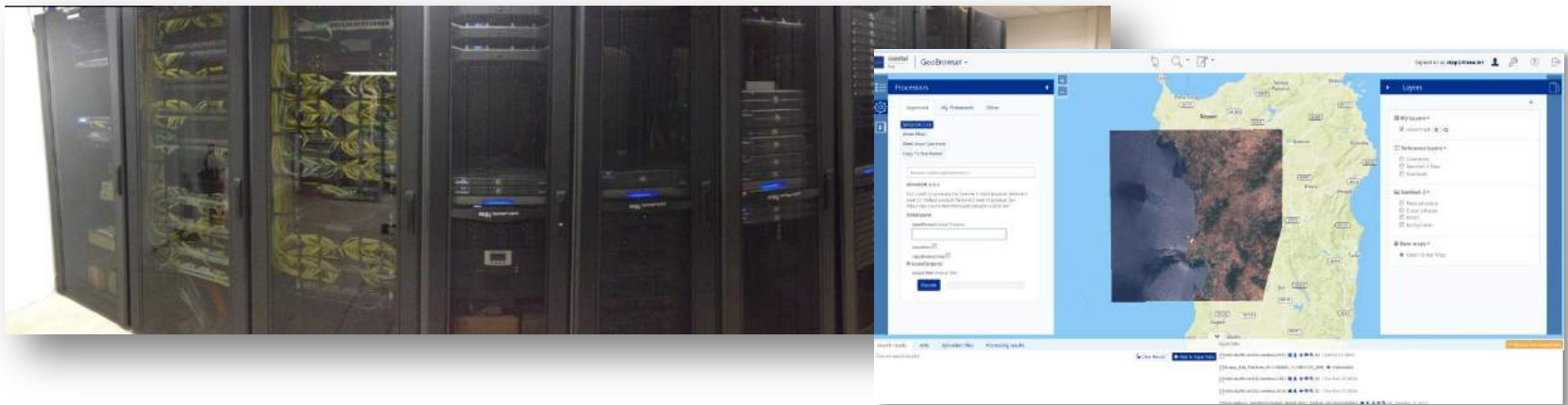
What we offer

□ Data archiving and processing infrastructures

- Data archiving and cataloguing
- Processing facilities: HPC-in-a-box
- Hardware architecture and management software solutions

□ Web services

- Remote access solutions: virtual collaborative environment, software integration tools for cluster access
- WebGIS, search and discovery interfaces

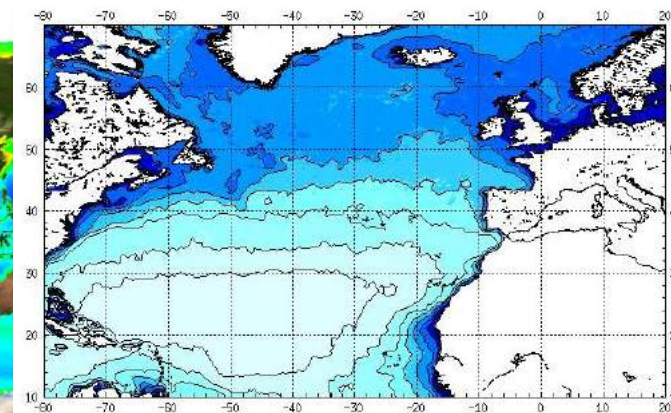
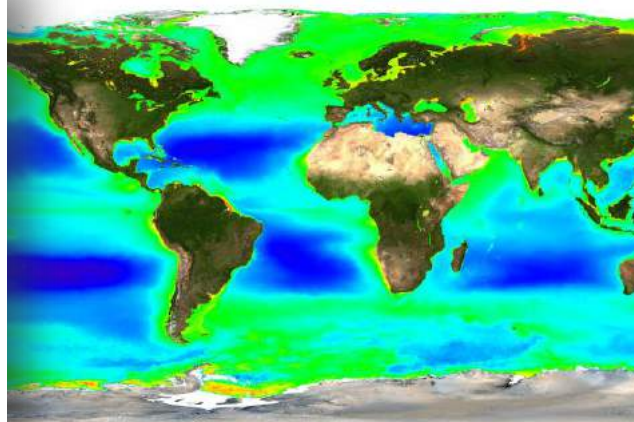
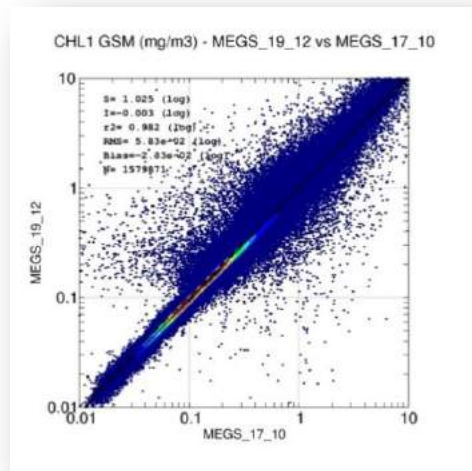


□ Data quality and validation

- Automatic data quality monitoring tools
- Validation methodology (in-situ, inter-sensor comparisons...)

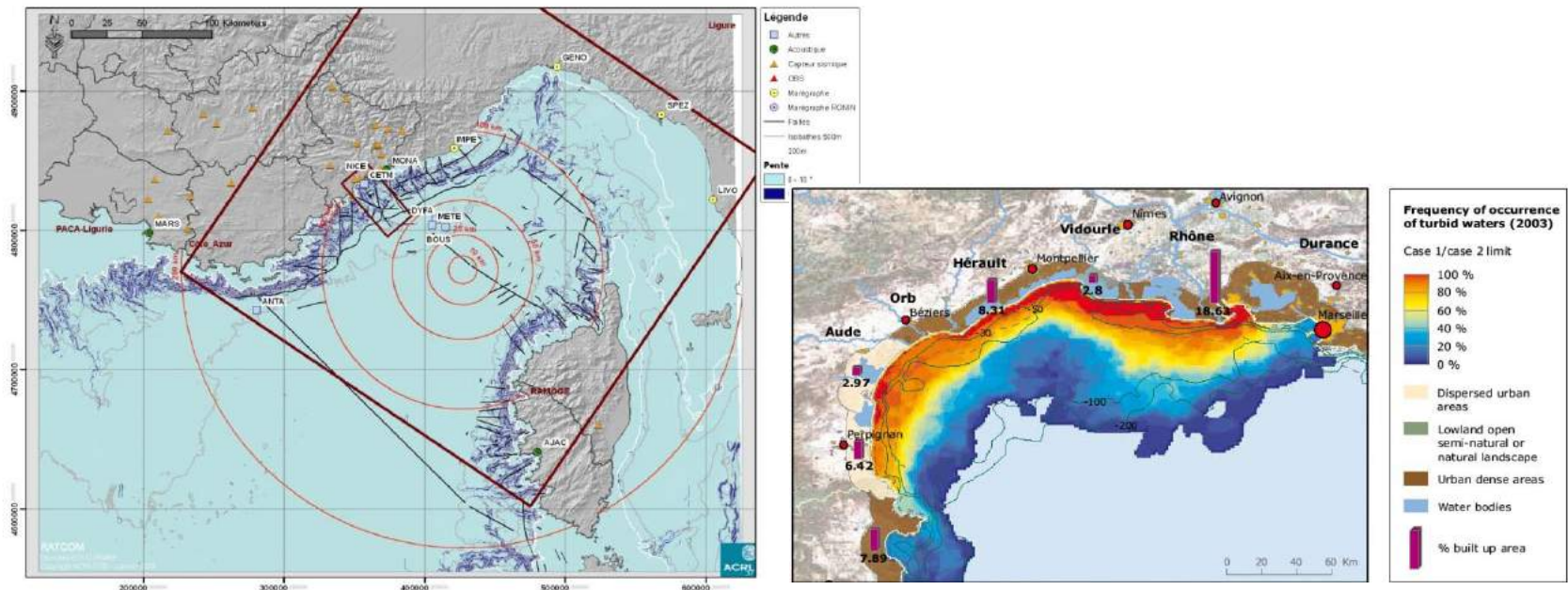
□ Generation of value-added products

- Expertise on Sentinel 2 and 3 products
- Atmospheric correction over land and water
- Bio-geophysical models for water
- Change detection for environment monitoring



Environmental and risk studies

- Expertise and support: methodology, data sourcing, validation...
- Web design for monitoring services



What we are looking for

- ❑ **Partnership for the Coastal Thematic Exploitation Platform**
 - Service developers for the monitoring & exploration of coastal areas
 - Data providers (in-situ, models, EO data)
 - Experts and scientists in EO data processing

- ❑ **Partners for services development**

- ❑ **Partners for environmental studies**



Thank you for your attention



information@acri.fr
www.acri.fr



information@acri-st.fr
www.acri-st.fr